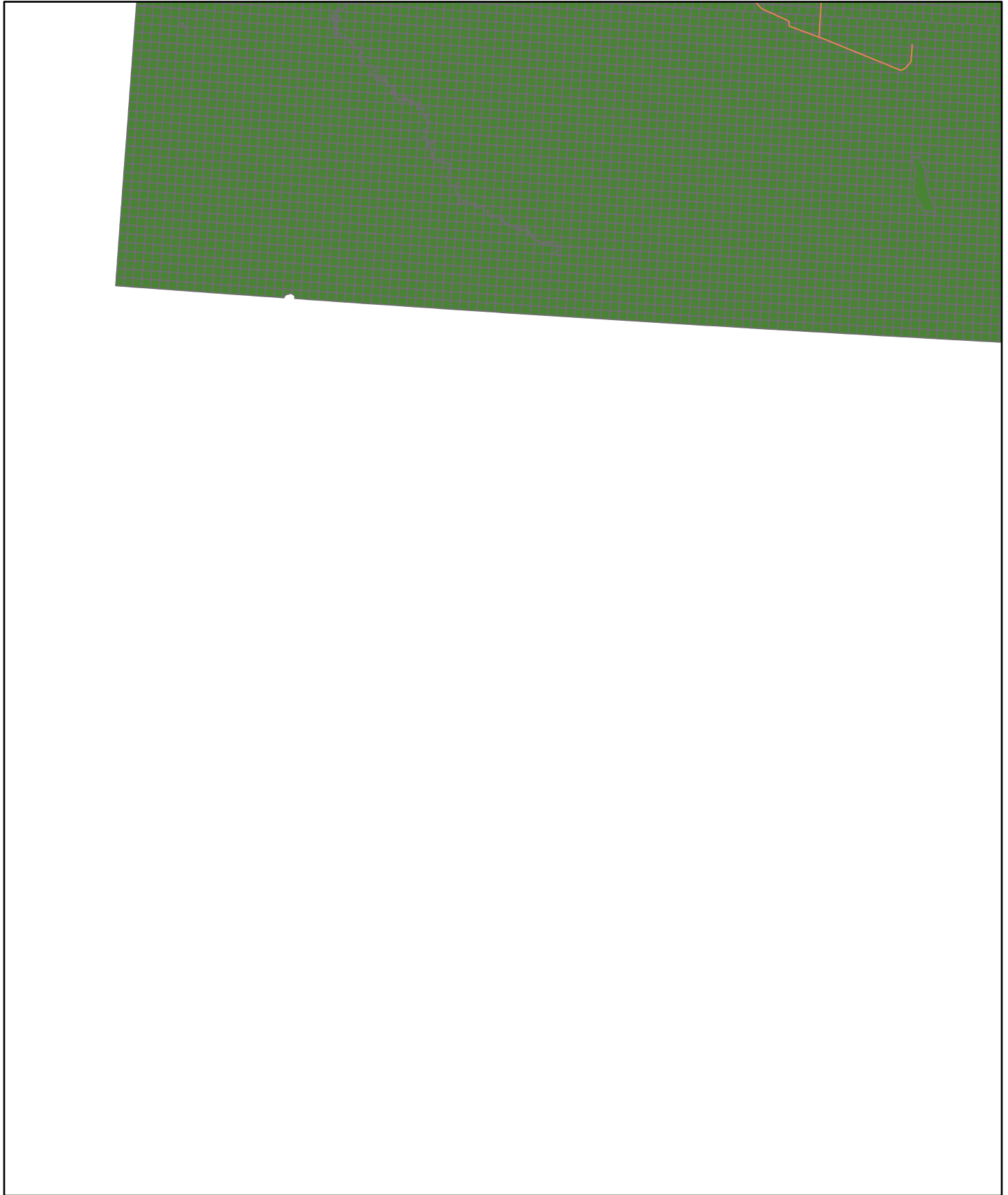
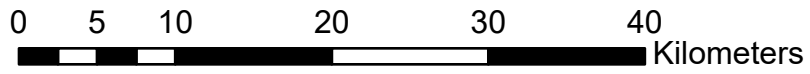


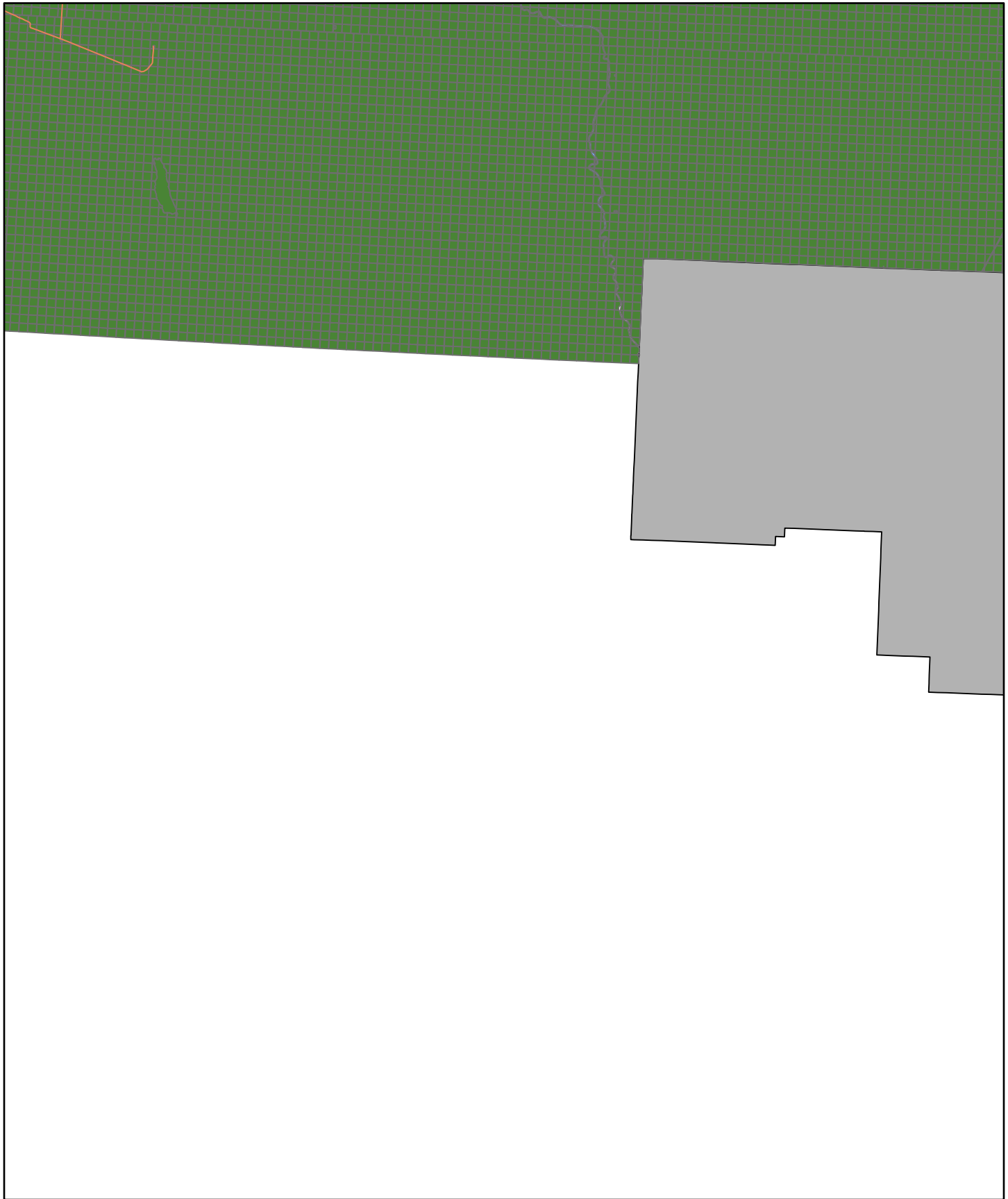
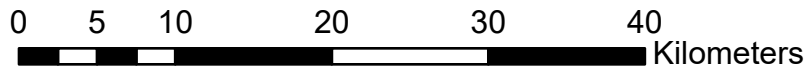
C1



Rural Land Use Districts

- | | | | |
|------------------------|-----------------------------|--------------------------|------------------------|
| Agricultural 1 | Country Residential | Recreation 1 | Parcel Boundary |
| Airport | Direct Control 1 | Recreation 2 | Roads |
| Country Recreational | Direct Control 2 | Remote Recreation | Waterbodies |
| Country Recreational 2 | Forestry | Rural Industrial General | First Nations Reserves |
| | Hamlet - Highway Commercial | Rural Industrial Light | |
| | Institutional | Urban Fringe | |

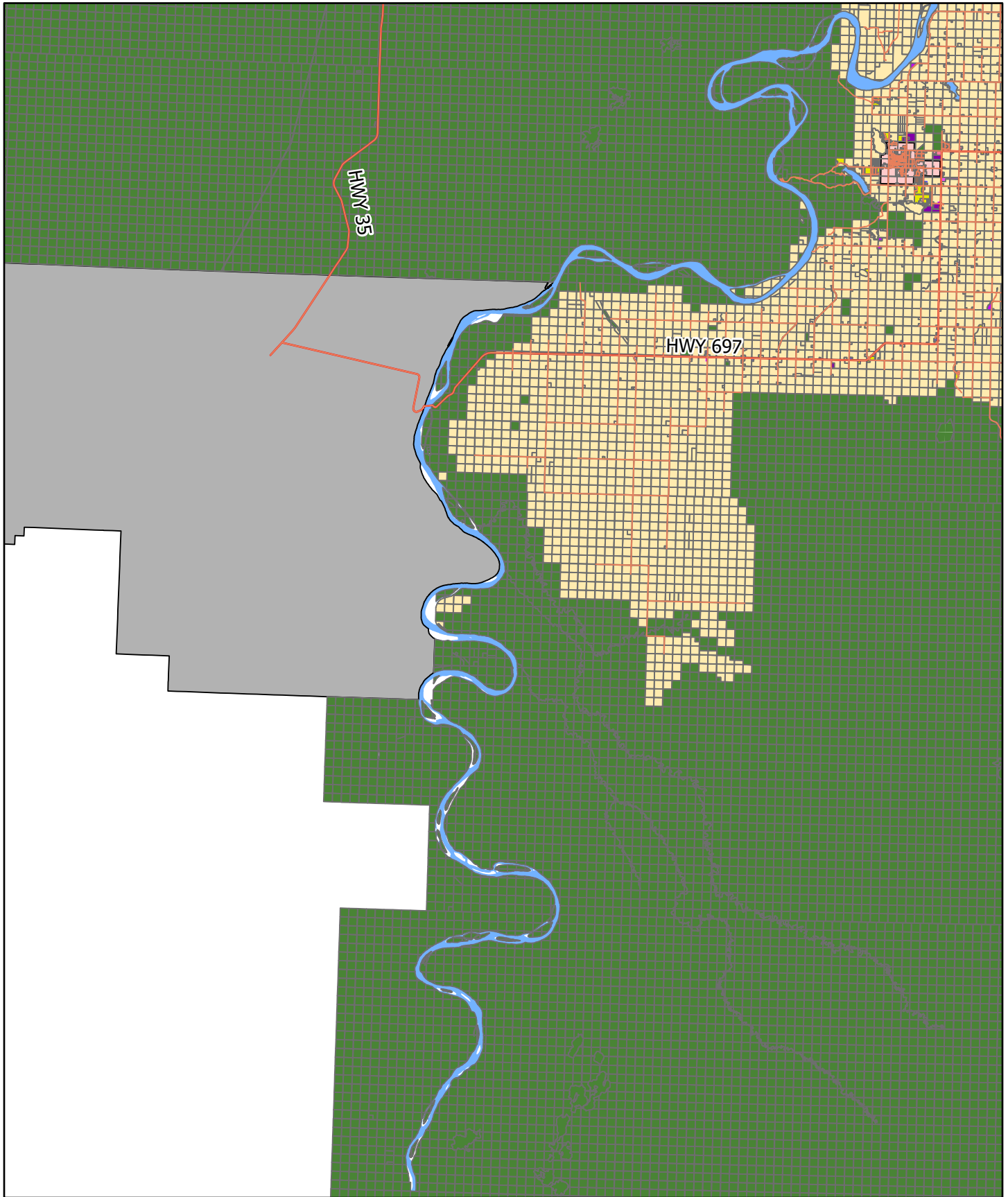




Rural Land Use Districts

- | | | | |
|------------------------|-----------------------------|--------------------------|------------------------|
| Agricultural 1 | Country Residential | Recreation 1 | Parcel Boundary |
| Airport | Direct Control 1 | Recreation 2 | Roads |
| Country Recreational | Direct Control 2 | Remote Recreation | Waterbodies |
| Country Recreational 2 | Forestry | Rural Industrial General | First Nations Reserves |
| | Hamlet - Highway Commercial | Rural Industrial Light | |
| | Institutional | Urban Fringe | |

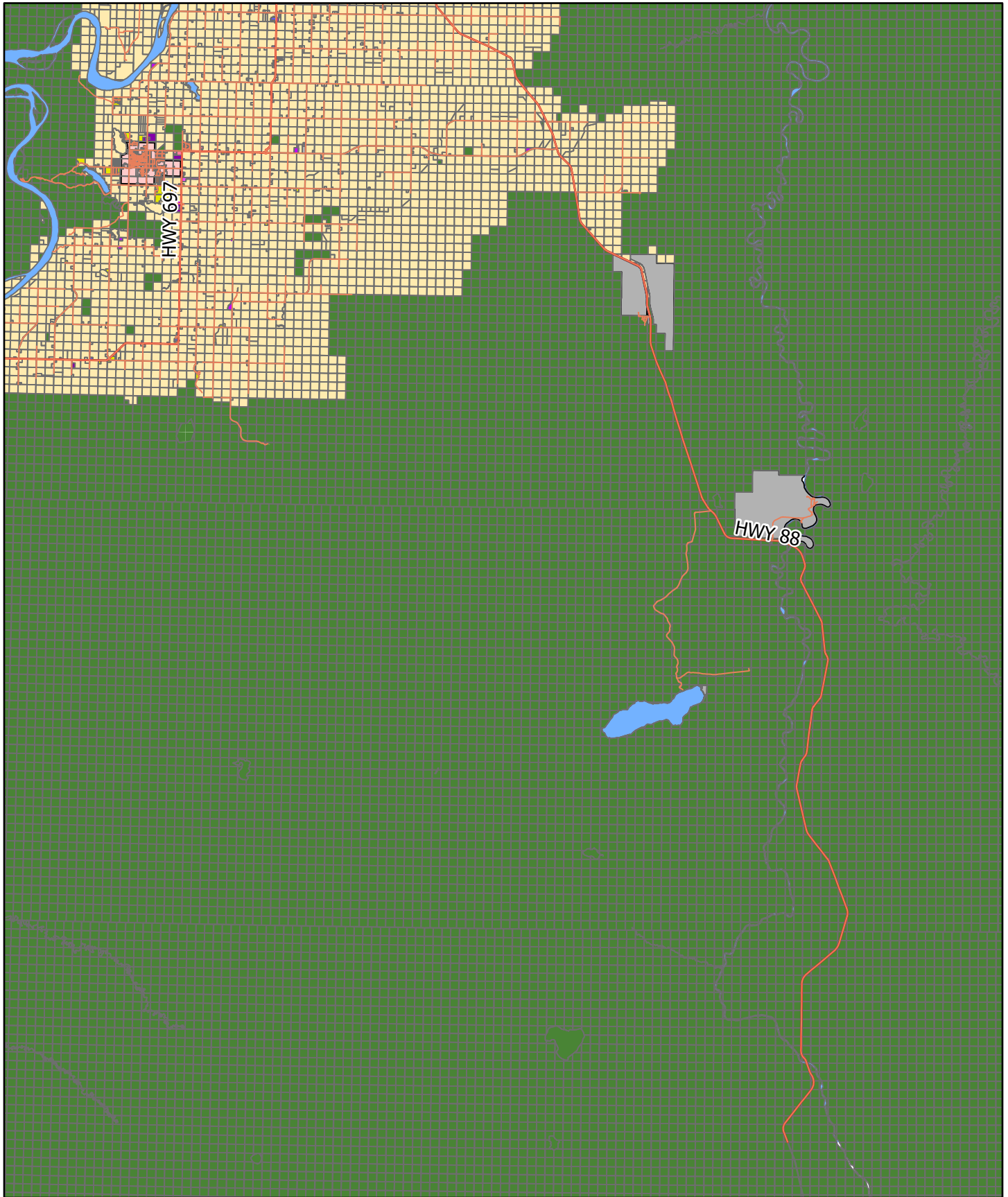




Rural Land Use Districts

- | | | | |
|------------------------|-----------------------------|--------------------------|------------------------|
| Agricultural 1 | Country Residential | Recreation 1 | Parcel Boundary |
| Airport | Direct Control 1 | Recreation 2 | Provincial Highways |
| Country Recreational | Direct Control 2 | Remote Recreation | Roads |
| Country Recreational 2 | Forestry | Rural Industrial General | Waterbodies |
| | Hamlet - Highway Commercial | Rural Industrial Light | Hamlet Boundaries |
| | Institutional | Urban Fringe | First Nations Reserves |

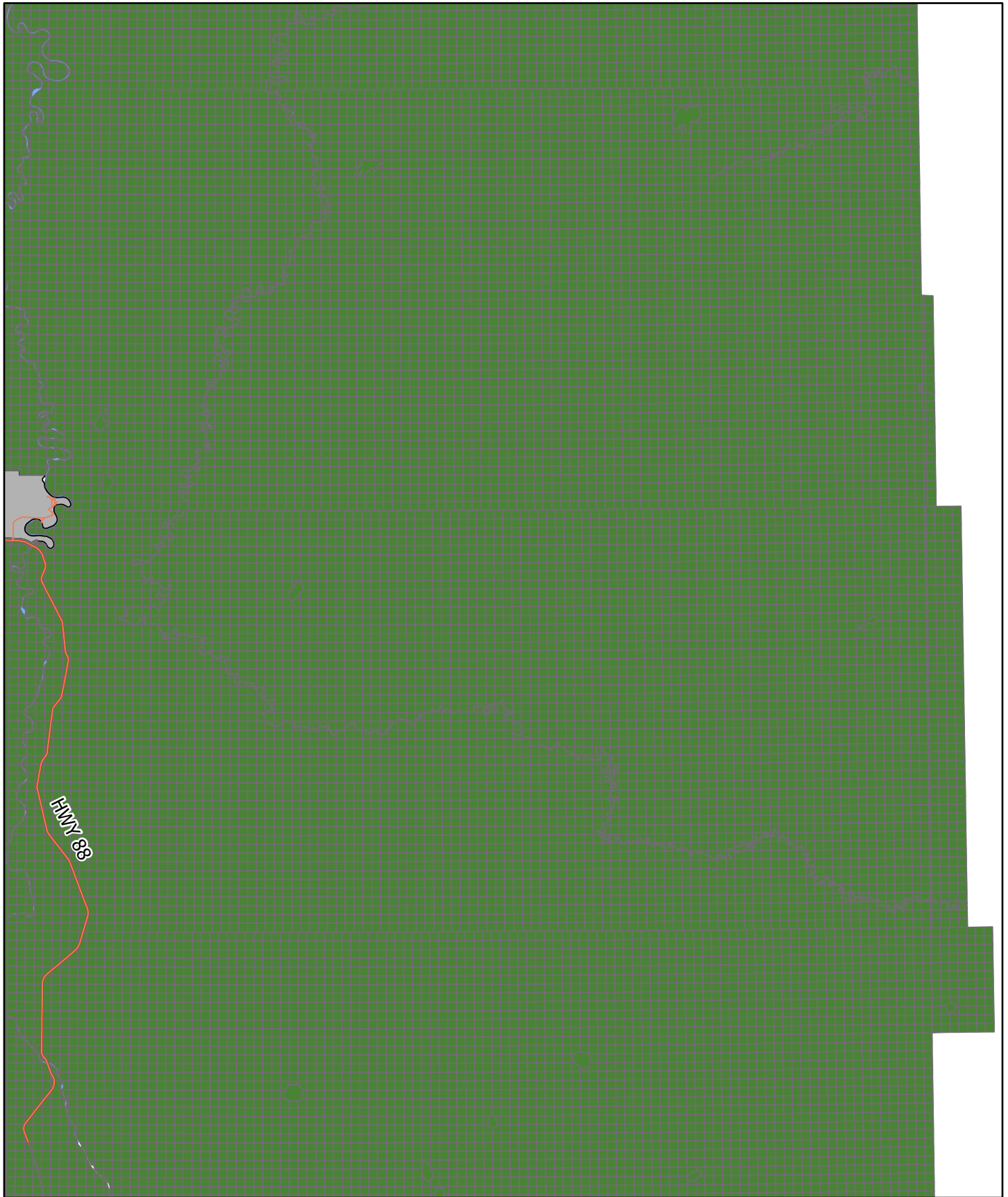




Rural Land Use Districts

- | | | | |
|------------------------|-----------------------------|--------------------------|---------------------|
| Agricultural 1 | Country Residential | Recreation 1 | Parcel Boundary |
| Airport | Direct Control 1 | Recreation 2 | Provincial Highways |
| Country Recreational | Direct Control 2 | Remote Recreation | Roads |
| Country Recreational 2 | Forestry | Rural Industrial General | Waterbodies |
| Institutional | Hamlet - Highway Commercial | Rural Industrial Light | Hamlet Boundaries |
| | Urban Fringe | First Nations Reserves | |





Rural Land Use Districts

- | | | |
|-----------------------------|--------------------------|------------------------|
| Country Residential | Recreation 1 | Parcel Boundary |
| Agricultural 1 | Recreation 2 | Provincial Highways |
| Airport | Remote Recreation | Roads |
| Country Recreational | Rural Industrial General | Waterbodies |
| Country Recreational 2 | Rural Industrial Light | First Nations Reserves |
| Direct Control 1 | Urban Fringe | |
| Direct Control 2 | | |
| Forestry | | |
| Hamlet - Highway Commercial | | |
| Institutional | | |

